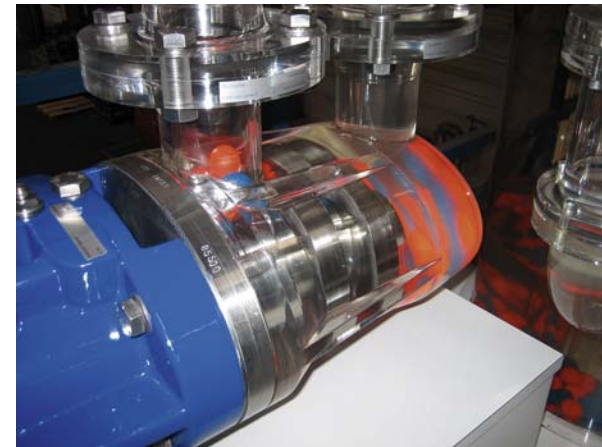



TWIN SCREW PUMPS TYPE SERIES SLI



Twin Screw Pump SLI

- SLI twin screw pumps are single-flow and self-priming
- SLI pumps feature no metal-to-metal contact the pump screws and the housing
- The axial system enables cautious, low-pulsation conveyance
- It protects the media and maintains size, surface and visual integrity of the products



- Well suited for fluids with low and high viscosity
 - Modular system
 - Self-priming
 - Equipment available according to ATEX and TA AIR
 - Contact-free intermeshing screws
 - Abrasion-free
 - Smooth handling
 - Low-pulsation conveyance
 - Dry running protection
 - Easy to maintain by single-flow
- 
- A blue industrial screw pump with a handwheel on top, set against a background of green wavy lines.

Technical Data SLI

SLI 80 | SLI 125 | SLI 180

Capacity 1 - 180 m³/h
(1 - 792 gpm)

Differential pressure 16 bar (232 psi)

Speed up to 3,000 rpm

Viscosity 1 - 100,000 cSt

Suction lift up to 8 m (26 ft)

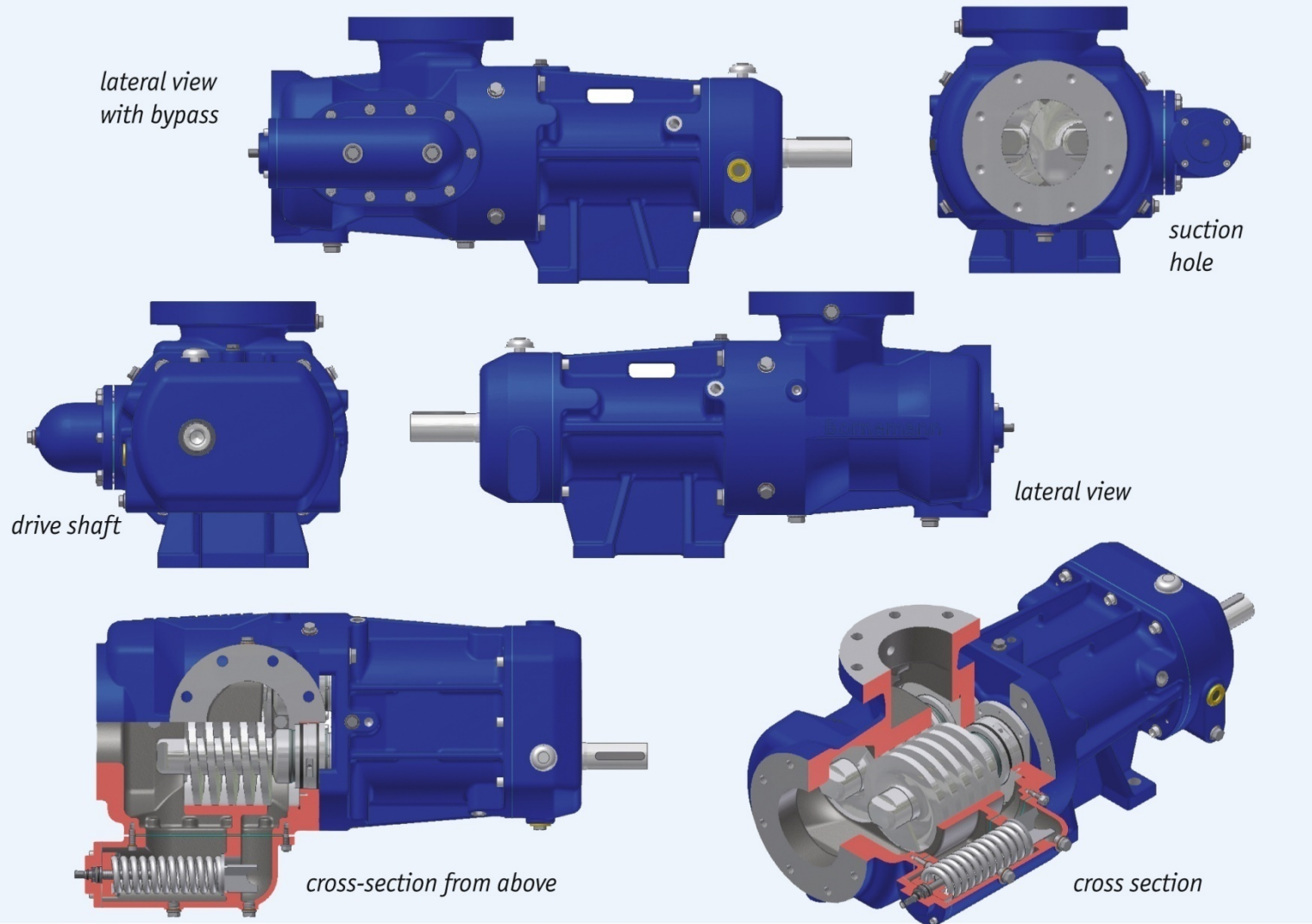
Rotating direction reversible

Heating temperature 120 °C (248 °F)

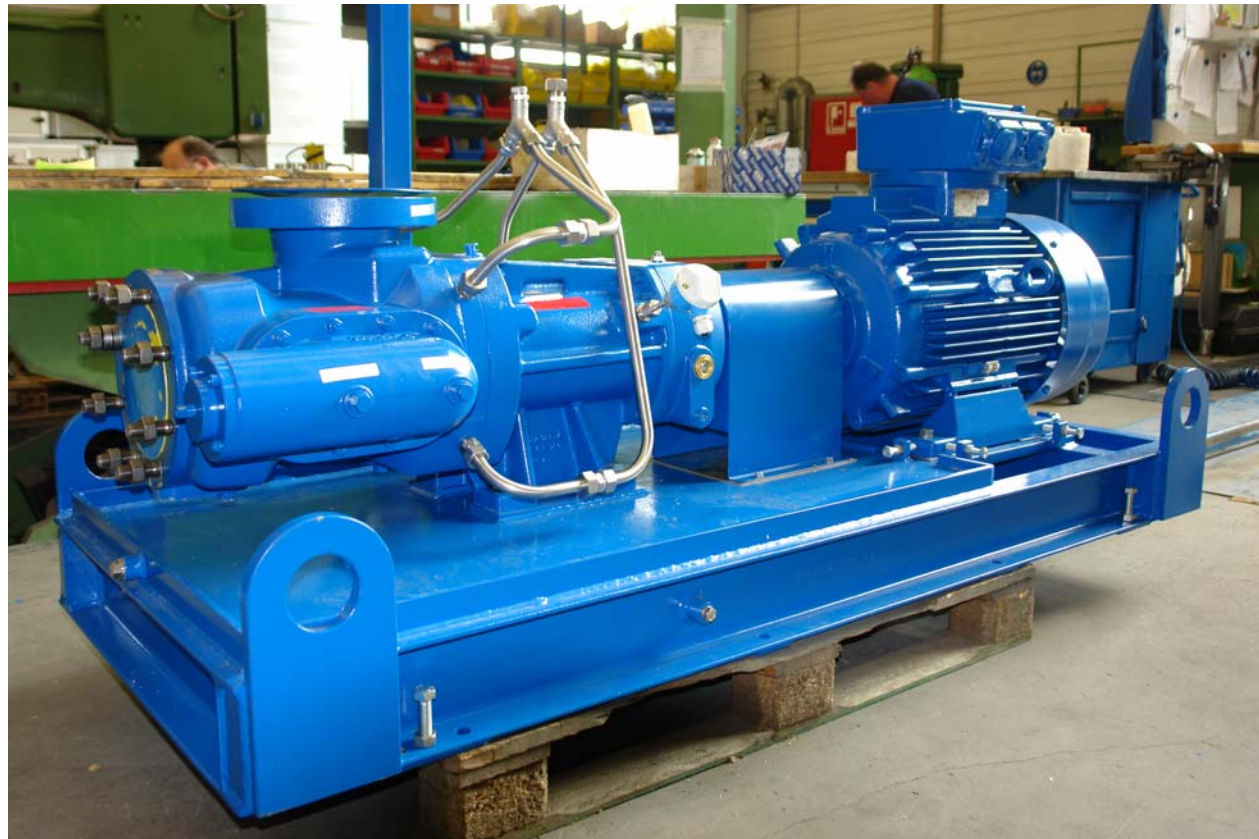
Material GGG-40 and 1,4408

Technical Data / Different Views

SLI 180 with bypass – different views



SLI



SLI

 **Bornemann
Pumps**



SLI

 **Bornemann
Pumps**



Chemicals Industry

- Colours and paints industry
- Building chemicals
- Finishing products (such as paints, water-soluble paints)
- Raw materials (such as polyoles, solvents)
- Cosmetics and pharmaceuticals industry



Applications

Power Stations, Refineries, Tank Storages

- Unloading systems for trucks
- Unloading stations for tank wagons
- Systems for emptying residues from pipelines and tanks



Applications

Shipbuilding

- Emptying tanks (stripping pump)



Recycling and Environment

- Pyrolysis systems (thermal processing)
- Upgrading systems for waste water
- Upgrading systems for old oils (condensate systems)
- Filtration technologies



Oil Industry

- Crude oil, water
- Multiphase-mixtures
- Contaminated media

